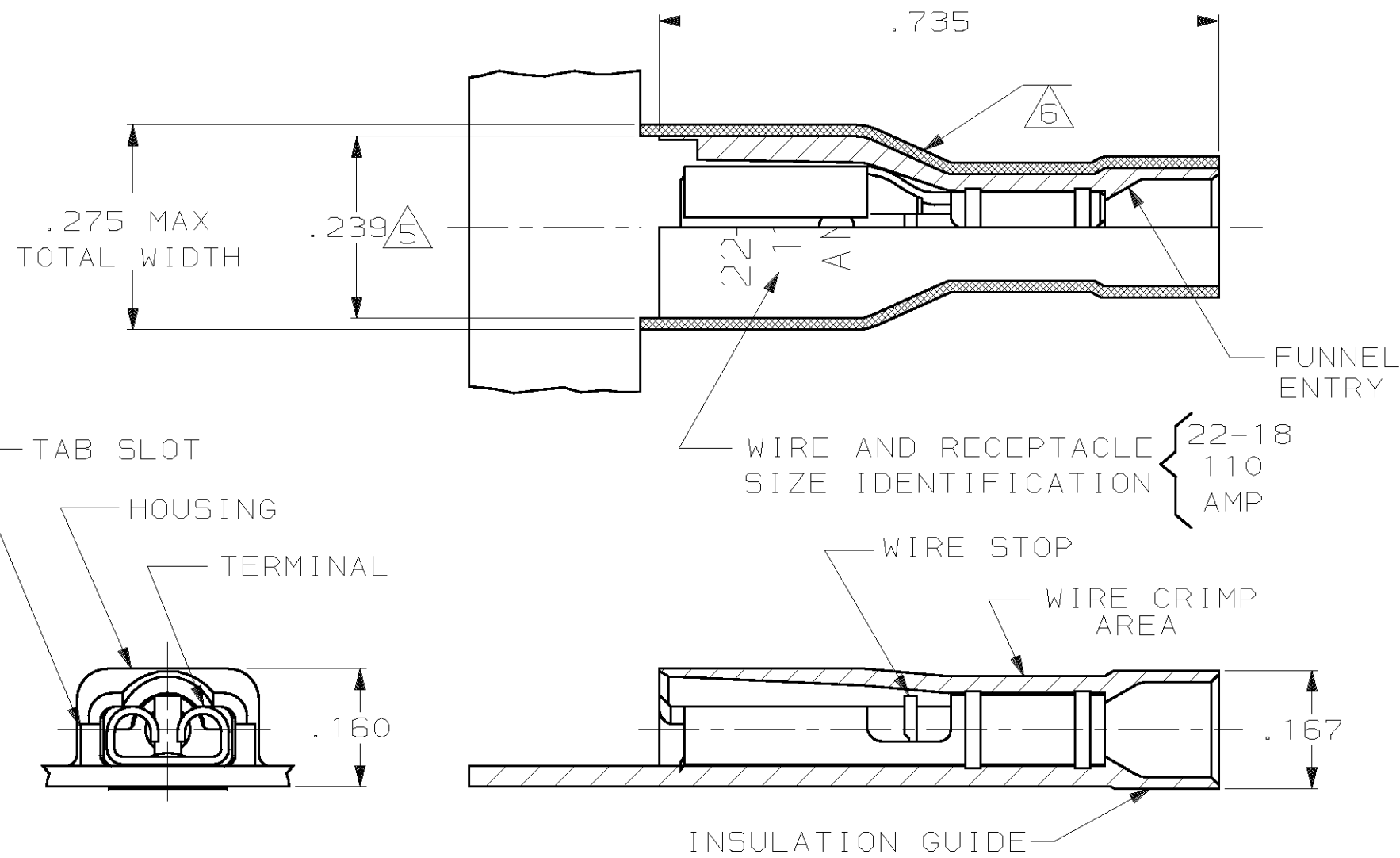


THIS DRAWING IS UNPUBLISHED. RELEASED FOR PUBLICATION, 19  
 © COPYRIGHT 19 BY AMP INCORPORATED. ALL INTERNATIONAL RIGHTS RESERVED.

LOC AF DIST 50 P F

REVISIONS				DATE	APPD
ZONE	LTR	DESCRIPTION			
	G	REV PER 0G1A-0147-99	3JUN99	JR/JH	



- 1 MATES WITH .020±.001X.110 OR .125 TAB
- 2 WIRE STRIP LENGTH .281
- 3 INSULATION RANGE .060-.120
- 4 CONTINUOUS STRIP ON REELS
- 5 DIMENSION DOES NOT INCLUDE TRIM BURR
- 6 .015 MAX CARRIER TRIM BURR PER SIDE IS ALLOWABLE IN THE SHADED AREA

HOUSING: NYLON, COLOR-RED TRANSLUCENT		RECEPTACLE: #3 HARD BRASS		TIN PL .000080 MIN THK		2-520932-2	
MATERIAL & FINISH						PART NO	
DO NOT SCALE PRINT. UNLESS SPECIFIED DIMENSIONS IN INCHES TOLERANCES ON: 2 PLC DEC ± - 3 PLC DEC ± .015 ANGLES ± -		DR 6/28/88 P FORTNEY CHK 7/6/88 MS FEHER APPD 7/6/88 K RANDOLPH APPD 7/6/88 TL SHUTTER PRODUCT SPEC 108-2044 APPLICATION SPEC 114-2123 WEIGHT -		AMP INCORPORATED Harrisburg, Pa. 17105 NAME RECEPTACLE ASSEMBLY, ULTRA-FAST PLUS, .110/.125 SERIES, 22-18 AWG			
MATERIAL SEE TABLE		FINISH SEE TABLE		SIZE <b>B</b>	FSCM NO 00779	DRAWING NO 520932	
				SCALE 5:1	SHEET 1 OF 1		